



ACCESS TO WORLD-CLASS CANCER EXPERTS AND CARE.



Facing cancer starts with knowing your options. SISC and Contigo Health ECEN Passport™ can help.

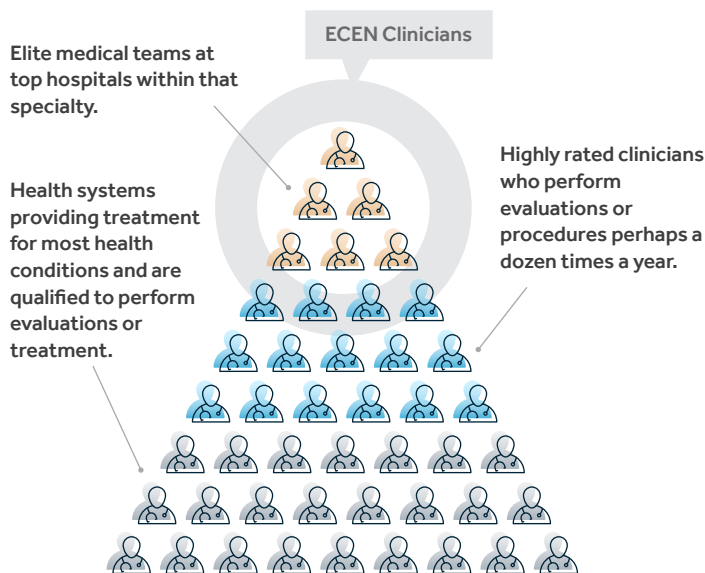
Contigo Health ECEN Passport is a centers of excellence (COE) program that provides access to specialized oncology evaluations at the City of Hope or Johns Hopkins Hospital, which are both National Cancer Institute-designated facilities.

SISC provides this benefit to you and your eligible family members at no additional cost.

SISC Oncology COE program benefits

- An expert, in-person or virtual (when available) evaluation by a multidisciplinary clinical team led by an oncologist who will address your particular form of cancer.
- A recommended care plan will be developed by an elite cancer care team and discussed with you or your family member and their treating oncologist.
- Access to treatment options when there is a barrier to care in your community.
- 12 months of continued access to specialized clinical resources.
- Navigation and advocacy support provided by the Contigo Health Case Management team every step of the way.
- Access to clinical trials and education about genetic risks when they are suitable for your specific condition.

No carrier authorizations are needed for the Oncology Center of Excellence Program. The content contained herein is for educational and informational purposes only and shall not be construed as tax or medical advice. Nothing contained herein shall be construed as a guarantee of benefits. You must maintain eligibility to have access to the program. Limited conditions may be excluded from the program. Terms and conditions apply. Per IRS guidelines, this benefit is subject to deductible for HSA members.



How This Program is Different

Ready to take the next step?

You qualify for the Oncology COE program by meeting all three requirements:

1. You're a SISC plan member enrolled in one of the Anthem or Blue Shield PPO plans.
2. You meet the clinical requirements of the COE program.
3. You have established care with a local doctor or oncologist.

If you need to travel for your evaluation at the COE facility, SISC will provide coverage for certain travel expenses for you and an adult caregiver.*

Let's go:

When you're ready to hear more, speak with a Contigo Health navigator at **877-220-3556** or visit sisc.contigohealth.com